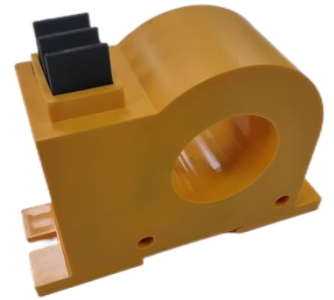


FS***W30 系列电流传感器



一、产品描述 Product description

1) 测量交流电流，输出直流电压；

Measuring AC current, output DC voltage;

2) 线性好、精度高、基本无温漂零漂；

Good linearity, high precision, basically no temperature drift zero drift;

3) 耐冲击、高可靠；

Impact resistance, high reliability;

4) 孔径 30mm，外形尺寸：L98 × W30 × H69mm；

Aperture 30mm, dimension: L98 × W30 × H69mm;

二、主要应用 Main applications

1) 电机工作电流检测，电机启动过流过载保护，电机短路电流检测；

Motor operating current detection, motor starting over and over load protection, motor short circuit current detection;

2) 主回路与测量回路强/弱电之隔离采样，可直接与 PLC 等连接；

Isolated sampling of strong/weak current in the main loop and measuring loop can be directly connected with PLC;

3) 检测，反馈，控制，监视。

Detection, feedback, control, monitoring.

注意：本产品在有防爆等要求场合时，必须置于防爆箱/柜中。

Note: This product must be placed in an explosion-proof box/cabinet when explosion-proof is required.

三、电气参数 Electrical parameter

FS100W30/ (5V/10V)		
可选量程 (50-2500A) Optional range (50-2500A)	测量范围 Measuring range	耐冲击电流 @ 1 分钟 Shock current resistance @ 1 min
50A	AC 0-50A	300A
100A	AC 0-100A	300A
200A	AC 0-200A	600A
300A	AC 0-300A	600A
400A	AC 0-400A	600A

500A	AC 0-500A	1000A
600A	AC 0-600A	1600A
700A	AC 0-700A	1600A
800A	AC 0-800A	1600A
900A	AC 0-900A	1600A
1000A	AC 0-1000A	2000A
1200A	AC 0-1200A	2000A
1500A	AC 0-1500A	2000A
1800A	AC 0-1800A	3000A
2000A	AC 0-2000A	3000A

四、主要性能参数(**A 为额定检测电流)

Main performance parameters (**A is rated detection current)

产品型号/Type	FS***W30/5V	FS***W30/10V
输出 Output voltage	DC 0-5V	DC 0-10V
输出限幅 Output limiting	DC 7V	DC 12V
负载 load	≥10KΩ	
工作电源 Working power supply	无源 N	
工作电流 Working current	无 N	
功耗 Power dissipation	无 N	
频带宽度 Band width	40-100Hz	
线性范围 Linear range	≥1.2I _{pn}	
输出线性 Output linearity	±0.5%F.S	
检测精度 Accuracy	±0.5%F.S	
响应速度 Response time	≤150ms	
隔离强度 Isolation strength	AC 6kV@50Hz @1min (信号输入/信号输出) AC 6kV@50Hz @1min (Signal input/Signal output)	
绝缘电阻 Insulation resistance	≥100MΩ	
工作湿度 Working humidity	不大于 95%	
工作温度 Ambient operating temperature	-25~+75 ℃	
贮存温度 Ambient storage temperature	-40~+85 ℃	
防护等级 Class of protection	IP20	

五、典型接线、安装结构 Typical wiring and installation structure

